



## eXceed Digital Scans Quality Guidelines

High-quality dental scans or impressions are critical for the eXceed process. The objective of this document is to list out the quality standards intra- or extra-oral scans have to comply with when submitted to eXceed.

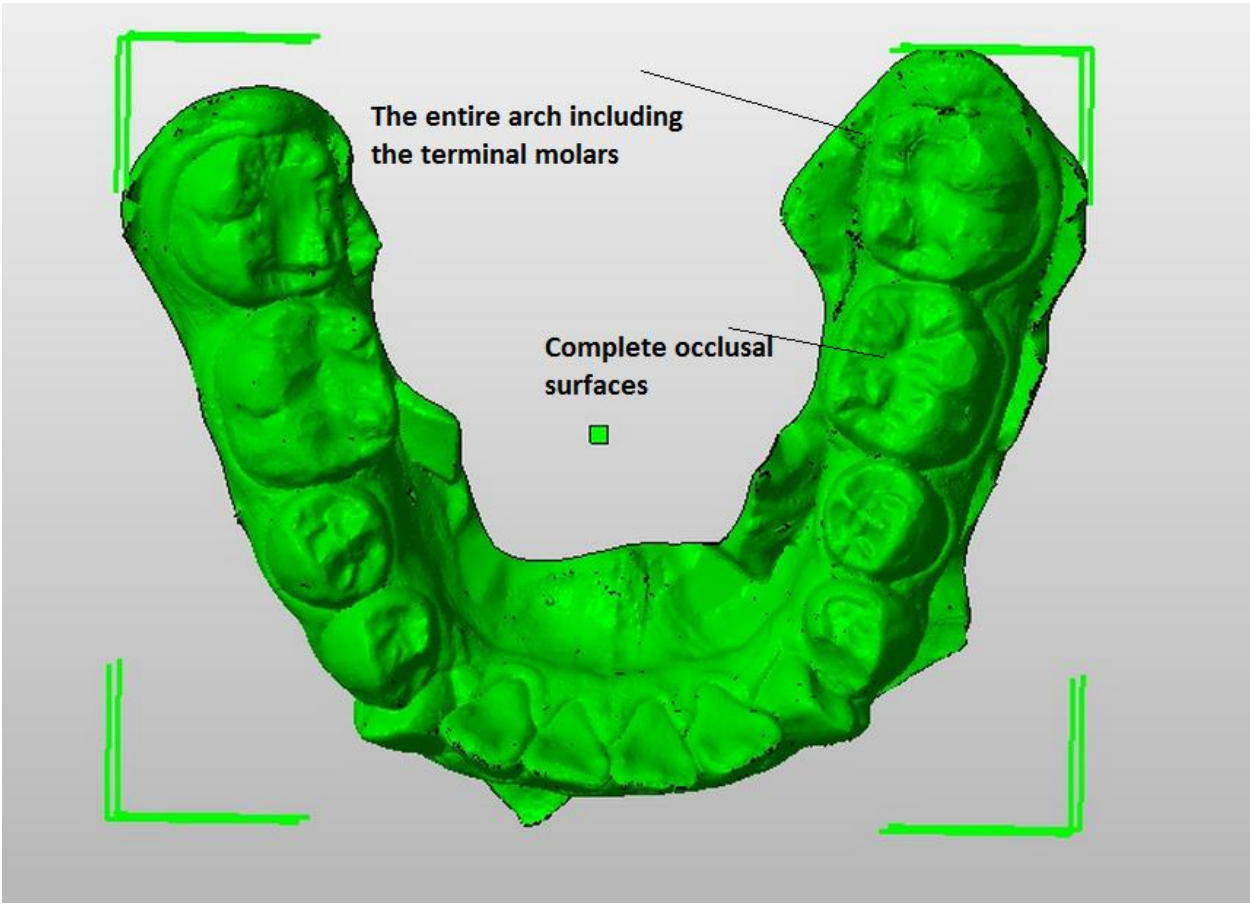
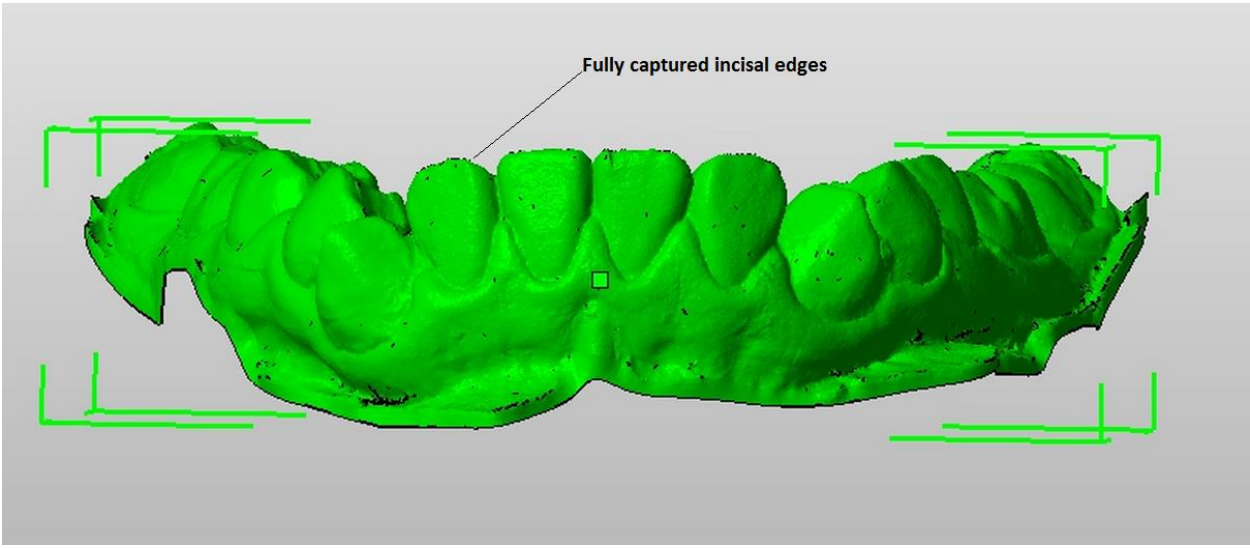
### General

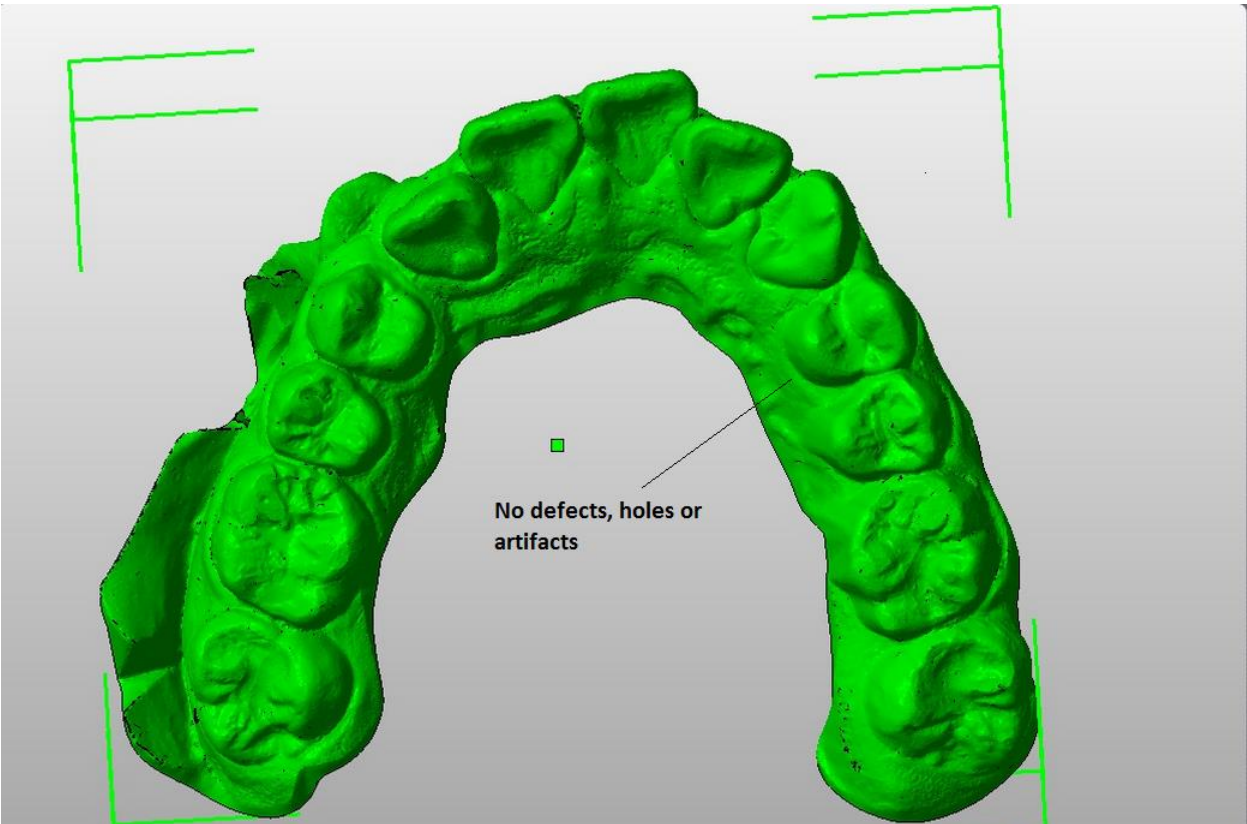
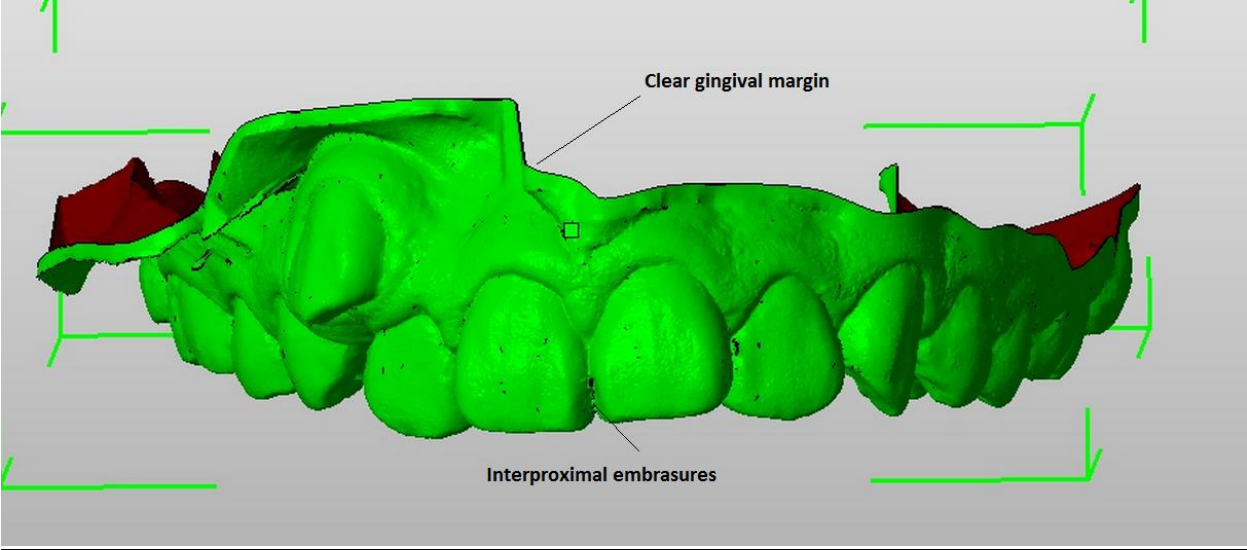
- STL format only
- Both arches should be captured, even when only a single arch treatment is requested.
- Both arches must be scanned and positioned in **occlusion**.
- Each arch saved as a **separate** STL file.
- A single arch file must contain between 100, 000 and up to 300 000 triangles.
- Typically, the single arch STL file size will be between 3 Mb to 15 Mb in size.
- When using the iTero® scanner from Align Technologies, it is recommended to select “**Vivera®**” or “**Invisalign®**” scan types. If those options are not enabled on the scanner, select “**iRecord®**”. (note – “**iCast®**” scans are not accepted).
- When using 3Shape Trios®, select the “**\_orig\_trios\_export.stl**” high resolution option (the other scan type only features low resolution).
- For other intra-oral scanners, please consult your local eXceed team.
- Link to high-quality sample STL files -  
<https://www.dropbox.com/sh/r7pos6maont9o9w/AABpylyqSrrD-JpFhUiY3N2Sa?dl=0>

### A high-quality scan should include:

- The entire arch including the terminal molars;
- All incisal edges and marginal ridges;
- Complete occlusal surfaces (no holes);
- Interproximal embrasures, IPR and natural interproximal spaces;
- Clear gingival margin with 3-5 mm of lingual and buccal gingivae;
- Left and right bite scans covering at least 3-5 teeth to ensure proper occlusion.
- No defects, holes, artifacts, bumps or tunnels

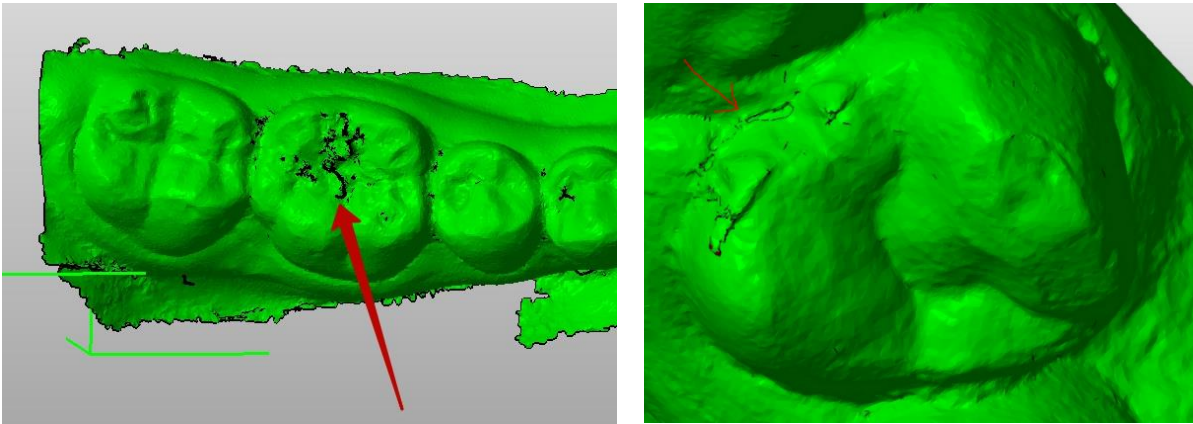
Examples of high-quality scans



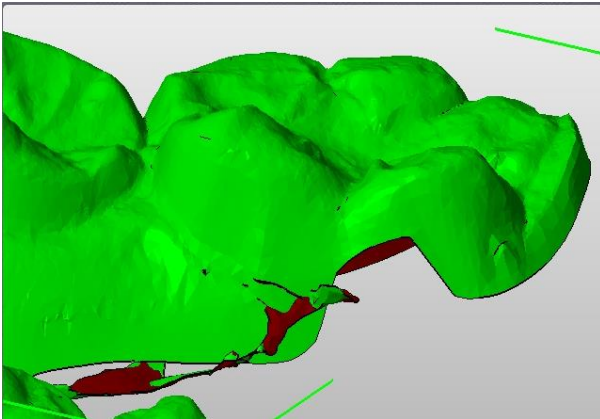


Examples of low-quality scans

Scanning was done too quickly and the iTero® software could not assemble the surfaces correctly:



An incomplete scan of the lingual area results in missing surfaces:



Incomplete lingual scans cause the iTero® software to create incorrect surfaces:

